

2016

Annual Meeting

Lake Todd Village District

Annual Report for Calendar Year 2015

Annual Report of the Lake Todd Village District for Calendar Year 2015

The District commissioners held three meetings in 2015 other than the budget hearing.

Dam Safety:

There was no further action on the fence. Installation is planned for 2016.

Financial Matters

The Treasurer reports that we took in \$33,072 and spent about \$33,574. We ended the year with about \$24,641, which includes about \$12,000 for the January loan payment. The Treasurer has prepared a simplified financial statement, which is appended. In addition, the Treasurer has prepared a chart showing the total expenditures for the dam improvements and the loan balance, which is appended at the end of this report.

Audit

An audit was performed on the 2014 books. The Auditor found that our financial records were in order and our procedures met requirements. The audit summary letter is appended.

Water Quality Testing

The water was sampled two times in 2014. Most parameters are stable within their normal range except pH, which is decreasing. This means that the water is becoming more acidic. The water test report from the State is appended at the end of this report.

Loons

Commissioner Snyder contacted the Loon Preservation Committee about installing a nesting platform. They agreed and it was installed. The loons did not use it.

Sponsor A Highway

In cooperation with the State Department of Transportation, the District cleans up about two miles of Route 103 from Main Street, Bradford to Fowler Mill Road. We have a clean-up three times a year, usually the first Saturday in May, the last Saturday in August, and the first Saturday in November. Please come and join us in this satisfying public service.

Web Site

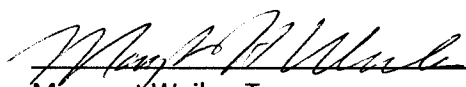
The web site has been kept up to date with the latest information throughout the year. Be sure to check it out when you can.

www.laketoddvillagedistrict.us

**Lake Todd Village District
Treasurer's Report
for the Calendar Year 2015**

	GENERAL FUND
1/1/2015	
Beginning Balance:	<u>\$25,142.60</u>
Income:	
Tax Income Bradford	8,851.00
Tax Income Newbury	23,863.00
Loan	0.00
Received from Commissioners	358.00
Total Income:	<u>\$33,072.00</u>
Expenses:	
Commissioners' Orders Paid	<u>33,573.62</u>
Total Expenses:	<u>\$33,573.62</u>
12/31/15	
Ending Balance:	<u>\$24,640.98</u>
 Current loan balance	 <u>\$129,591.18</u>

Respectfully submitted,

	<u>3/15/16</u>
Margaret Weiler, Treasurer	Date



Town of Newbury Other - Lake Todd Fund
MS-9 for Year Ending December 31, 2015

PRINCIPAL - ACCOUNT #5233000094										INCOME - ACCOUNT #5233000094				
ANNUAL TOTALS										ANNUAL TOTALS				
DATE	TRUST NAME	PURPOSE	% OF TOTAL	BALANCE 01/01/15	NEW FUNDS	GAIN/ LOSS	EXPEND	BALANCE 12/31/15	BALANCE 01/01/15	Gross Income	Mgmt Fees	Transf/ Income/Exp	BALANCE 12/31/15	TOTAL
2007	Lake Todd - Non Cap Reserve	Reserves	100.00%	9,260.29	-	0.03	-	9,260.32	361.32	181.76	(72.01)	-	471.07	9,731.39
100%				9,260.29	-	0.03	-	9,260.32	361.32	181.76	(72.01)	-	471.07	9,731.39

Thursday, March 3, 2016

Lake Todd Village District
PO Box 169
Bradford, NH 03221

Re: Summary of Annual Audit for Fiscal Year 2015

To Whom It May Concern:


An audit of the Lake Todd Village District General Ledger/Financial Records was conducted on, Tuesday, February 23, 2016, in accordance with Form MS 60. The audit was performed by Peter Carl and was assisted by Margie Weiler, Treasurer of the Lake Todd Village District.

The audit was conducted by utilizing form MS 60. The audit consisted of analyzing and comparing the Lake Todd Village District General Ledger, bookkeeping and balance sheet to the various bank statements. Form MS 60 led the auditor through a litmus test of questions comparing random deposits and written checks shown in the bookkeeping to the actual bank statements verifying that the transactions were properly documented.

Form MS60 also required that information verifying the authority of parties who sign checks and maintain the bookkeeping. The form also requires the verification of periodic reconciliations.

The audit showed that all transactions that were compared in the bookkeeping to the bank statements were verified. It also showed general ledger year-end balances that matched the year-end bank statement.

The only suggestion for improvement would be similar to ones made in years past. Those suggestions would be to upgrade the bookkeeping process from an Excel spreadsheet to a more industry accepted accounting software such as a QuickBooks.

Prepared by:

Peter Carl
Auditor



Volunteer Lake Assessment Program Individual Lake Reports

TODD LAKE, NEWBURY, NH

MORPHOMETRIC DATA

Watershed Area (Ac.):	384	Max. Depth (m):	6.1	Flushing Rate (yr ⁻¹)	0.5
Surface Area (Ac.):	168	Mean Depth (m):	2.2	P Retention Coef:	0.88
Shore Length (m):	5,100	Volume (m ³):	1,466,500	Elevation (ft):	670

TROPHIC CLASSIFICATION

Year	Trophic class
1991	MESOTROPHIC
2009	MESOTROPHIC

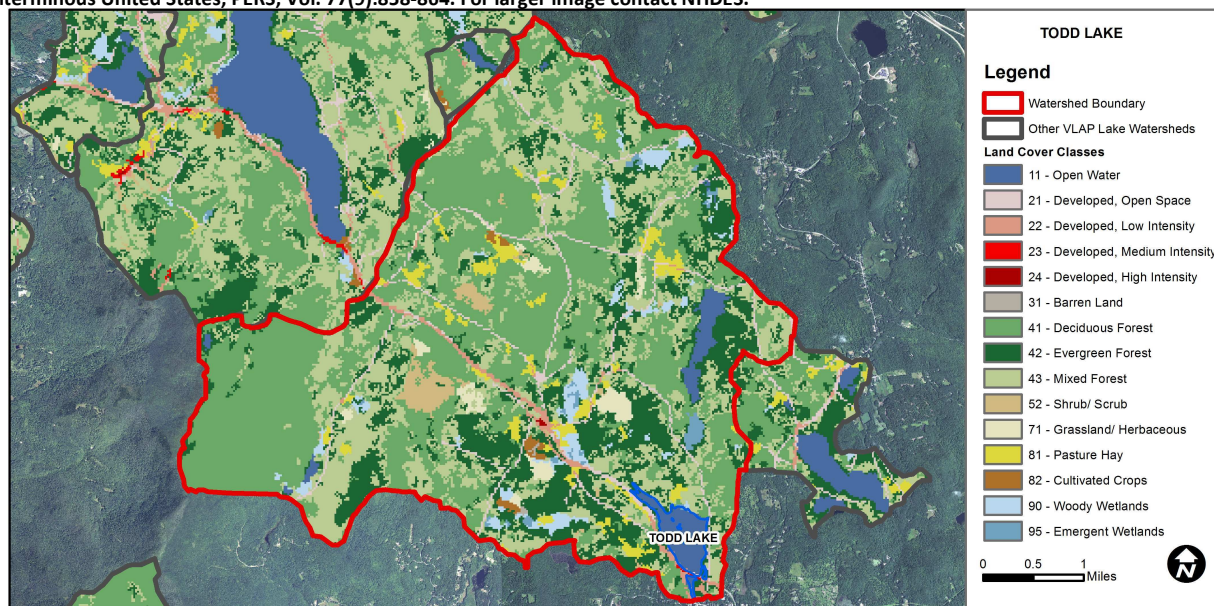
KNOWN EXOTIC SPECIES

The Waterbody Report Card tables are generated from the DRAFT 2014 305(b) report on the status of N.H. waters, and are based on data collected from 2004-2013. Detailed waterbody assessment and report card information can be found at www.des.nh.gov/organizations/divisions/water/wmb/swqa/index.htm

Designated Use	Parameter	Category	Comments
Aquatic Life	Phosphorus (Total)	Good	The calculated median is from 5 or more samples and is < indicator and > 1/2 indicator and the chlorophyll a indicator is okay.
	pH	Slightly Bad	>10% of samples exceed criteria by a small margin (minimum of 2 exceedances).
	Oxygen, Dissolved	Very Good	There are a total of at least 10 samples with 0 exceedances of criteria.
	Dissolved oxygen satura	Good	There are at least 10 samples with one, but < 10% of samples, exceeding criteria.
	Chlorophyll-a	Good	The calculated median is from 5 or more samples and is < indicator and > 1/2 indicator.
Primary Contact Recreation	Escherichia coli	Very Good	Where there are no geometric means, all bacteria samples are < 75% of the geometric mean. Where there are geometric means all single bacteria samples are < the SSMC and all geometric means are < geometric mean criteria.
	Chlorophyll-a	Good	There are at least 10 samples with one, but < 10% of samples, exceeding indicator.

WATERSHED LAND USE SUMMARY

Fry, J., Xian, G., Jin, S., Dewitz, J., Homer, C., Yang, L., Barnes, C., Herold, N., and Wickham, J., 2011. Completion of the 2006 National Land Cover Database for the Conterminous United States, PERS, Vol. 77(9):858-864. For larger image contact NHDES.



Land Cover Category	% Cover	Land Cover Category	% Cover	Land Cover Category	% Cover
Open Water	2.52	Barren Land	0.05	Grassland/Herbaceous	1.44
Developed-Open Space	2.83	Deciduous Forest	41.51	Pasture Hay	2.92
Developed-Low Intensity	1.03	Evergreen Forest	18.9	Cultivated Crops	0.31
Developed-Medium Intensity	0.04	Mixed Forest	23.99	Woody Wetlands	2.36
Developed-High Intensity	0.02	Shrub-Scrub	1.5	Emergent Wetlands	0.6



VOLUNTEER LAKE ASSESSMENT PROGRAM INDIVIDUAL LAKE REPORTS

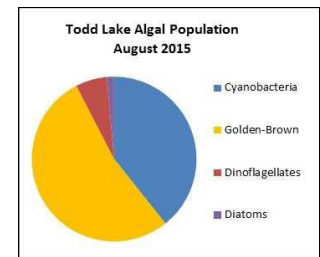
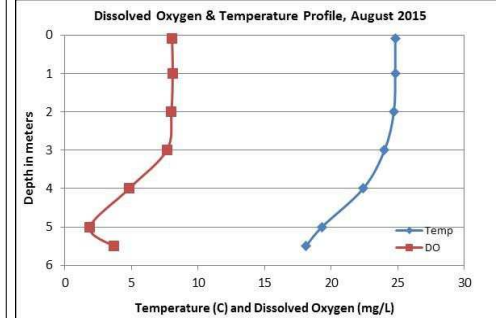
TODD LAKE, NEWBURY

2015 DATA SUMMARY

RECOMMENDED ACTIONS: Lake water quality has generally remained with average ranges for NH lakes and is indicative of Mesotrophic conditions. The stable trends are a good sign indicating water quality has not significantly changed since monitoring began; however data appears to have become more variable over time. The increased frequency and intensity of storm events and resulting stormwater runoff and wetland flushing may be impacting the lake. Residents should identify areas prone to erosion and install stormwater controls to reduce erosion into tributaries and the lake. Maintaining vegetated buffers along shorelines to prevent erosion of steep slopes is also important in protecting water quality and reducing the impacts of both stormwater runoff and wave action from boating activities. Keep up the great work!

OBSERVATIONS (Refer to Table 1 and Historical Deep Spot Data Graphics)

- **CHLOROPHYLL-A:** Chlorophyll levels were slightly elevated in June and then decreased to low levels in August. Average chlorophyll levels remained stable with 2014 and were slightly less than the state median. Historical trend analysis indicates relatively stable chlorophyll levels with moderate variability between years.
- **CONDUCTIVITY/CHLORIDE:** Epilimnetic (upper water layer), hypolimnetic (lower water layer), Andrew Bk., and Outlet conductivity and chloride levels were slightly greater than the state medians but not above a level of concern. Gillingham Dr. Inlet and Reservoir Bk. conductivities were low.
- **TOTAL PHOSPHORUS:** Epilimnetic phosphorus levels were higher in June when algal growth was higher and then decreased to low levels in August. Average epilimnetic phosphorus decreased from 2014, was less than the state median, and was the lowest measured since 2004. Historical trend analysis indicates highly variable epilimnetic phosphorus since monitoring began. Hypolimnetic phosphorus levels were within a moderate range and remained fairly stable from June to August. Andrew Bk. phosphorus levels were slightly elevated in June following a storm event and sediment was noted in the sample. Gillingham Dr. Inlet phosphorus levels were elevated in August during low flow conditions. Reservoir Bk. and Outlet phosphorus levels were within low to moderate ranges.
- **TRANSPARENCY:** Transparency was low (worse) in June likely due to algal growth, increased (improved) in early August, and then decreased to a low range in late August due to wind and wave action. Average transparency improved slightly from 2014 and was slightly less than the state median. Historical trend analysis indicates highly variable transparency since monitoring began. Transparency measured with the viewscope (VS) was much better than that measured without (NVS) and likely a better representation of actual conditions.
- **TURBIDITY:** Epilimnetic and hypolimnetic turbidities were slightly elevated and above average for those stations, particularly in August. Gillingham Dr. Inlet turbidity was elevated in early and late August likely due to low flow conditions and water rich in organic acids, or moderately colored. Outlet turbidities remained low. Andrew and Reservoir Bks. turbidities were slightly elevated in June and sediment was noted in both samples.
- **pH:** Epilimnetic, Andrew Bk., Outlet, and Reservoir Bk. pH levels were within the desirable range 6.5-8.0 units. However, historical trend analysis indicates significantly decreasing (worsening) epilimnetic pH since monitoring began. Hypolimnetic pH was less than desirable and slightly acidic.



Station Name	Table 1. 2015 Average Water Quality Data for TODD LAKE								
	Alk. mg/l	Chlor-a ug/l	Chloride mg/l	Cond. uS/cm	Total P ug/l	Trans. m		Turb. ntu	pH
						NVS	VS		
Epilimnion	8.4	4.18	8	54.9	9	3.13	4.29	1.62	6.61
Hypolimnion				54.8	14			2.30	6.16
Andrew Brook			14	87.2	20			1.69	6.88
Gillingham Dr. Inlet			3	35.0	27			2.45	6.44
Outlet				55.0	10			0.69	6.75
Reservoir Brook				31.7	15			0.95	6.70

NH Water Quality Standards: Numeric criteria for specific parameters. Results exceeding criteria are considered a water quality violation.

Chloride: > 230 mg/L (chronic)

E. coli: > 88 cts/100 mL – public beach

E. coli: > 406 cts/100 mL – surface waters

Turbidity: > 10 NTU above natural level

pH: between 6.5-8.0 (unless naturally occurring)

NH Median Values: Median values for specific parameters generated from historic lake monitoring data.

Alkalinity: 4.9 mg/L

Chlorophyll-a: 4.58 mg/m³

Conductivity: 40.0 uS/cm

Chloride: 4 mg/L

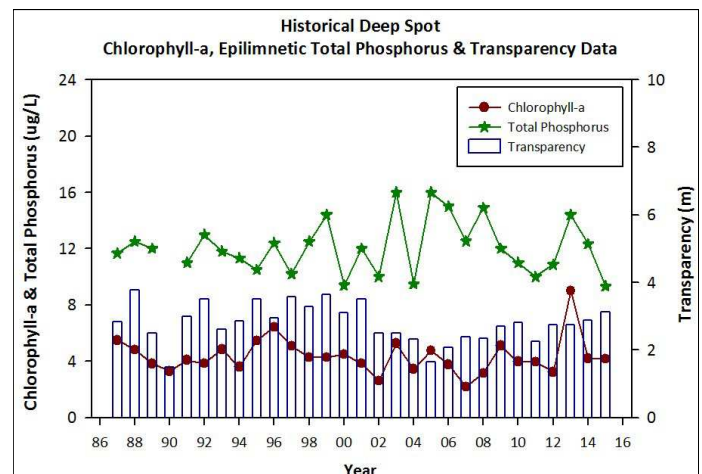
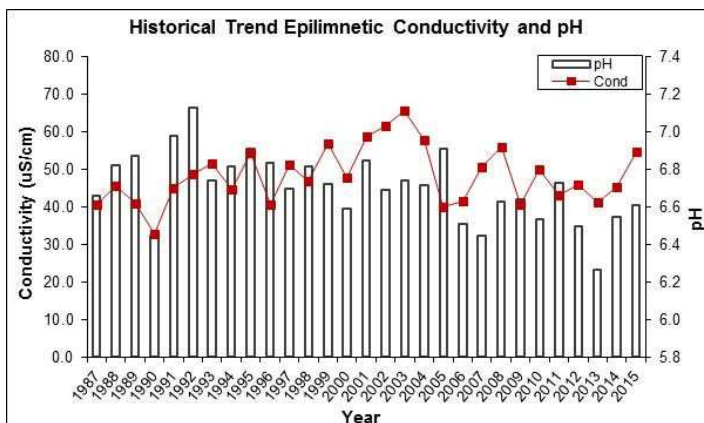
Total Phosphorus: 12 ug/L

Transparency: 3.2 m

pH: 6.6

HISTORICAL WATER QUALITY TREND ANALYSIS

Parameter	Trend	Explanation	Parameter	Trend	Explanation
Conductivity	Stable	Trend not significant; data moderately variable.	Chlorophyll-a	Stable	Trend not significant; data moderately variable.
pH (epilimnion)	Worsening	Data significantly decreasing.	Transparency	Stable	Trend not significant; data highly variable.
			Phosphorus (epilimnion)	Stable	Trend not significant; data show low variability.



Lake Todd Village District
TOWNS OF BRADFORD and NEWBURY, NEW HAMPSHIRE
Saturday, June 27th 2015

The Moderator, Tim Rodd, called the meeting to order at 9:00 a.m. Officers of the Lake Todd Village District were introduced. It was explained that in order to vote or to call a motion, you must be a registered voter in the LTVD. The moderator explained that the warrant articles would be voted on by a show of hands. The moderator also explained all people present can ask questions or make comments. Hard copies of the 2014 annual treasurer's report and Warrent Article were distributed.

ARTICLE 1. To see if the Village District will vote to elect by unofficial ballot the following:

Commissioner	- 3 year term - June 2011 to June 2018
Moderator	- 1 year term - June 2011 to June 2016
Clerk	- 1 year term - June 2011 to June 2016
Treasurer	- 1 year term - June 2011 to June 2016
Auditor	- 1 year term - June 2011 to June 2016

The moderator read article one. Bill Weiler moved for the article. Steve Snyder Seconds. Nominations began.

- Commissioner, three year term. Frederico Montanari is nominated by Steve Snyder. Bill Weiler seconds. Nomination is closed. The Moderator called for the vote. Frederico Monanari was elected.
- Moderator, one year term. Tim Rodd is nominated by Cynthia Snyder. Janet Lausten seconds. Nomination is closed. The Moderator called for the vote. Tim Rodd is elected.
- Clerk, one year term. Bill Weiler nominated Cindy Snyder. Steve Snyder seconds. Nomination is closed. The Moderator called for the vote. Cindy Snyder was elected.
- Treasurer, one year term. Cynthia Snyder nominated Margie Weiler, Steve Snyder seconds. Nomination is closed. Moderator called for the vote. Margie Weiler was elected.
- Auditor, one year term. Steve Snyder nominated Peter Carl, Frederico Montanari seconds. Nomination is closed. Moderator called for the vote. Peter Carl was elected.

ARTICLE 2 . To see if the Village District will raise and appropriate the sum of \$28,312.00 for general operations.

The Moderator read article two. Moderator asked if there were any questions.

With no further questions, Bill Weiler moved for the article, Steve Snyder seconds. A vote was taken. The motion was passed.

Article 3. To see if the Village District will vote to raise and appropriate the sum of four thousand seven hundred dollars (\$4,700) to complete the erection of a safety fence around the dam. Recommended by the Board of Commissioners (Majority vote required).

Copies of the annual budget sheet were handed out. The Moderator read article three. Bill Weiler moved to adopt. Steve Snyder seconds. Commissioner Weiler explained the reason for the cost overrun.

Lee Ormiston, one of the dam abutters asked to speak to the assembly regarding an offer he made to the commissioners regarding the fence on his side of the dam. Commissioner Bill Weiler declined to allow the discussion as it was not related to Article 3. The Moderator read the Article for clarification.

With no further questions, Dick Mattee moved for the article, Steve Snyder seconds. A vote was taken. The motion was passed.

Article 4. To transact any other business that may legally come before said meeting.

The Moderator moved to discuss other business.

Other business discussion:

The Moderator read off some of the topics from the previous year and asked if anyone wanted to speak about them.

Commissioner Weiler gave an overview of the LTVD liability insurance and possibility of changes proposed by the state to risk pool type of liability insurance.

Commissioner Snyder gave the update and an overview of the changes in the weed maps from previous years. He explained how the weather and boating traffic have increased the spread of some of the more invasive NON exotic plants. Discussion continued with questions regarding what can be done via chemical etc to control weeds. The state will not allow but Commissioner Snyder will be sending out notice about the weeds and suggestions to boaters to help reduce weed spread. The Snyder's will be hosting a weed watchers review. Date to follow.

Joyce Singra noted an increase in public boat launch in traffic coming in by the bridge and asked if there were any way to limit access by non residents. Discussion and ideas for restriction followed. Commissioners noted the lake is a public body of water and we can't restrict access. Further, the access point in question is controlled by DOT so we can't even reduce the size of the opening to restrict boat size.

Commissioner Snyder briefly discussed Steele road boat launch and public access. Chain installed by Steele road resident and private property sign has reduced traffic.

The moderator asked for a loon update. Janet & Mark Lausten graciously placed the loons nesting platform after the winter. They have offered to maintain it and make it more attractive to the loons. The loons are nesting this year but behind the floating nest. Janet asked about possibly getting a floating sign to deter boaters from coming too close to the island. Carol Tonkin will work with Janet to get a sign in place.

Cynthia Snyder made note of the following special dates: Flare night is Fri July 3rd 9:00 p.m.

The LTVD Social to be held at the Carls this year. *Tentative Dates suggested September 6th*
Notice will go out.

The moderator asked if there were other questions from the floor. With no further questions the moderator moved to adjourn the meeting.
Cynthia Snyder Seconds. The motion was accepted and the meeting was adjourned at 10:30 a.m.

Cynthia Snyder seconds.
Meeting was adjourned at 10:05 am.

Respectfully submitted by:

Cynthia Snyder
Lake Todd Village District Clerk

Lake Todd Village District

Dam Improvement Project

Calendar Year	Engineering	Legal	Permits & Fees	Easement	Inspections	Daniels Construction	Penstock Work	Totals
2007	\$ 3,200.00							\$ 3,200.00
2008	\$ 484.04		\$ 4,000.00					\$ 4,484.04
2009	\$ 8,429.00	\$ 400.00						\$ 8,829.00
2010	\$ 3,548.35	\$ 1,684.50	\$ 504.12					\$ 5,736.97
2011	\$ 5,520.40	\$ 2,955.88	\$ 578.00	\$ 6,000.00	\$ 12,000.00	\$ 79,650.00		\$ 106,704.28
2012	\$ 552.75				\$ 6,400.00	\$ 162,850.00	\$ 605.48	\$ 170,408.23
Totals	\$ 21,734.54	\$ 5,040.38	\$ 5,082.12	\$ 6,000.00	\$ 18,400.00	\$ 242,500.00	\$ 605.48	\$ 299,362.52

Original Loan Amount \$ 204,500.00

Current Loan Balance \$ 119,767.50